

Building capacity

Apudthama has the 2nd largest freehold land trust in Australia and no paid staff and no income stream

Drawing together existing knowledge:

studies , books, records

Apudthama

Country Planning

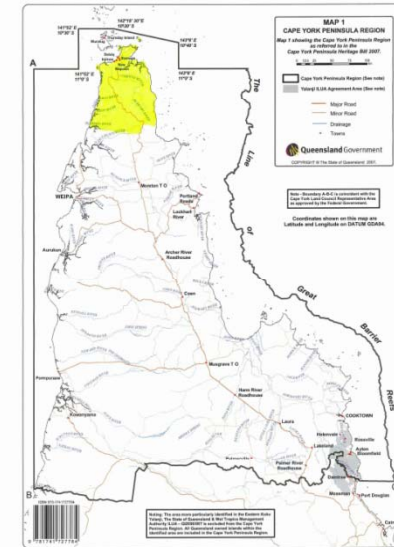
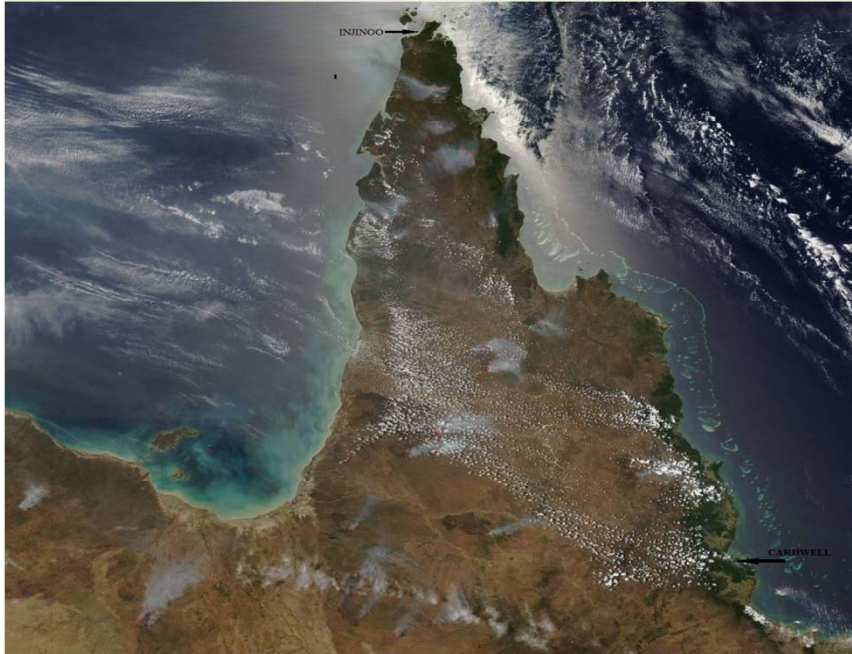
Identifying gaps in knowledge

*Geographic-parts of country
Thematic- types of information*

Writing the Plan

*Sitting down and talking about what we know about
country, what we want to do with country*

Building capacity



- The Trust is trying to build its capacity to effectively manage the lands it holds in Trust. It is using this planning project funded by DERM to help collect the information that it needs to make informed decisions about future use of country.
- It has also recently recruited a secretariat officer (its only paid employee) to help it be more efficient. She will help organise the community workshops and look after the information arising from this project in addition to managing our small office.
- Balkanu is also assisting us with governance support.
- We are developing a website (funded through this DERM project) to communicate with our Traditional Owners and keep them informed about this project and our work in general.(this is under construction)

Collating information

Over the years a lot of scientists, ethnographers and archaeologists have walked across our land.

Most of this information is in government departments, and published and unpublished reports.

We have commissioned two small projects with DERM funding. Dave Fell (3D Environmental) is collating the natural values information and a small team led by Shelley Greer (JCU) is collating the cultural values information. (these projects are underway)

We have commissioned a user needs analysis for a GIS system to help us organise information relating to country.(this has been completed)

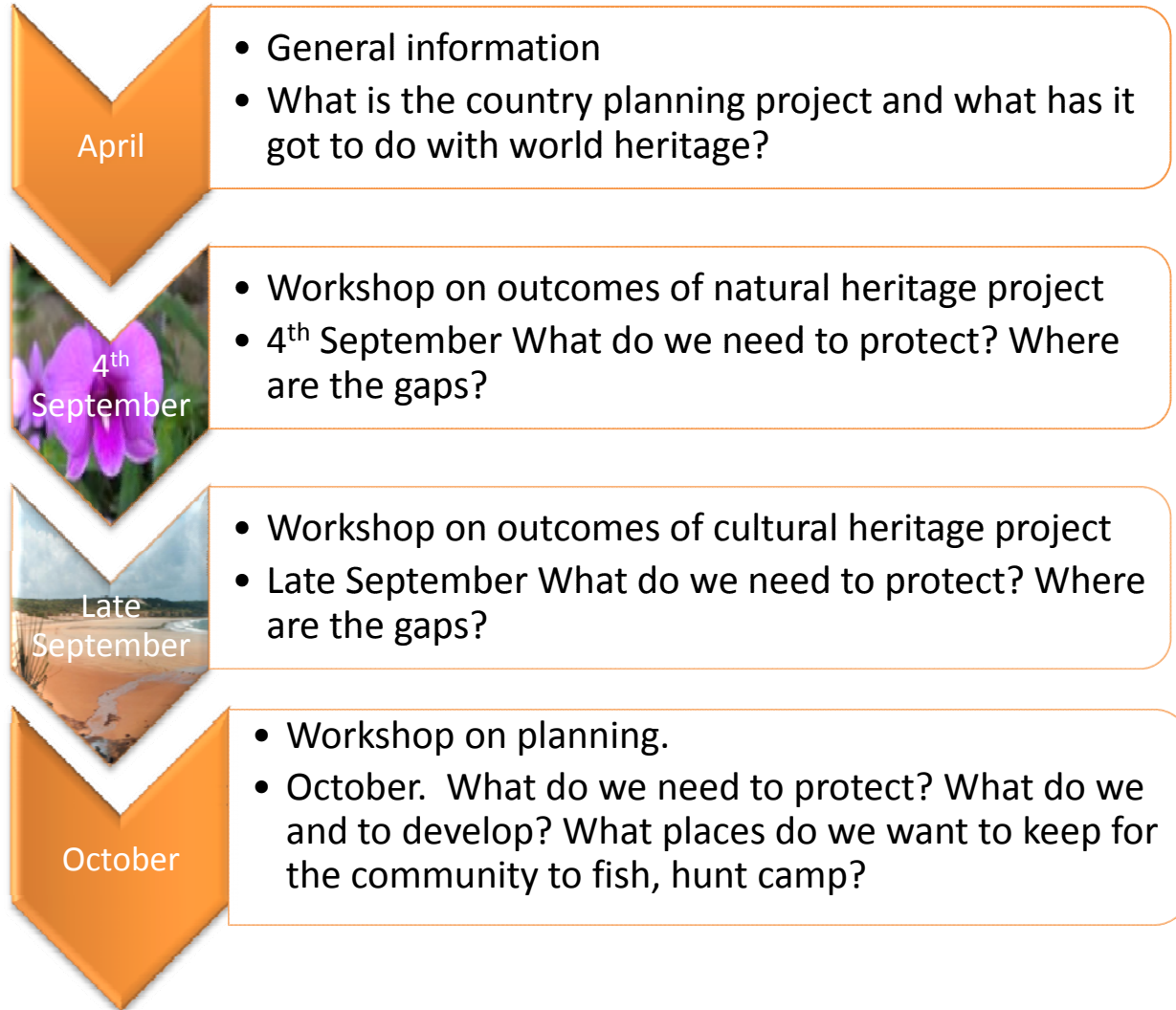
Identifying Gaps in Knowledge

- Of course we know a lot about country and once we have collated the scientific information we will also know what others have learnt about our country BUT
- We are aware that there are some parts of our country that we know less about.
- Through mapping we will identify the gaps in knowledge and we can target projects that explore the values of these places.
- Some gaps in scientific knowledge we may be able to fill with our traditional knowledge and vice versa.

Writing the Plan

Once we have as much information at our fingertips and we can make our own maps we will sit down together and draw up a plan that will guide how we look after our country.

Part of that planning will be deciding whether we support a world heritage nomination (as a cultural landscape) over part or all of our country .



Common Questions

- What about mining?
- Does this mean we have to lease them the land?
- Who owns the land and who makes decisions about it?
- Will there be money to help us manage our country?
- Will there be jobs?
- How can we develop an economy with World Heritage?
- Can we still get Heathlands and Jardine reserve back?
- Can we still hunt and fish?
- Will the government return the USLs if we agree?

Challenges

- Money – we have limited resources and despite the funding from DERM there are some unfunded project components e.g the GIS. (Solution- we are attempting to broker something with the NPARC rangers & WoC as the rangers also need a GIS system)
- Herding cats! Our board members are all busy people with demanding day jobs. It is hard to meet external deadlines when we have to do everything on top of our jobs. (Solution- the appointment of the Secretariat Officer and employment of a part time project co-ordinator via DERM and JCU)
- Sustainability we need to find a way for this to continue (i.e secretariat, data management, research into gaps) after the country planning project finishes. (Solution- well we don't have one – yet! but the board is looking at a range of possibilities including developments and grant money)
- Changing Goal Posts- In the course of this project the government has constantly back flipped....the C'wealth put it's left foot in and then its left foot out then it shook it all about and now the State government is doing the hokey pokey with the bio-regional plan. Solution ???



Thank You

The Apudthama Land Trust would like to thank DERM (or whatever you are called now!) for the opportunity and the financial support to do this project .

